

The Chesterfield



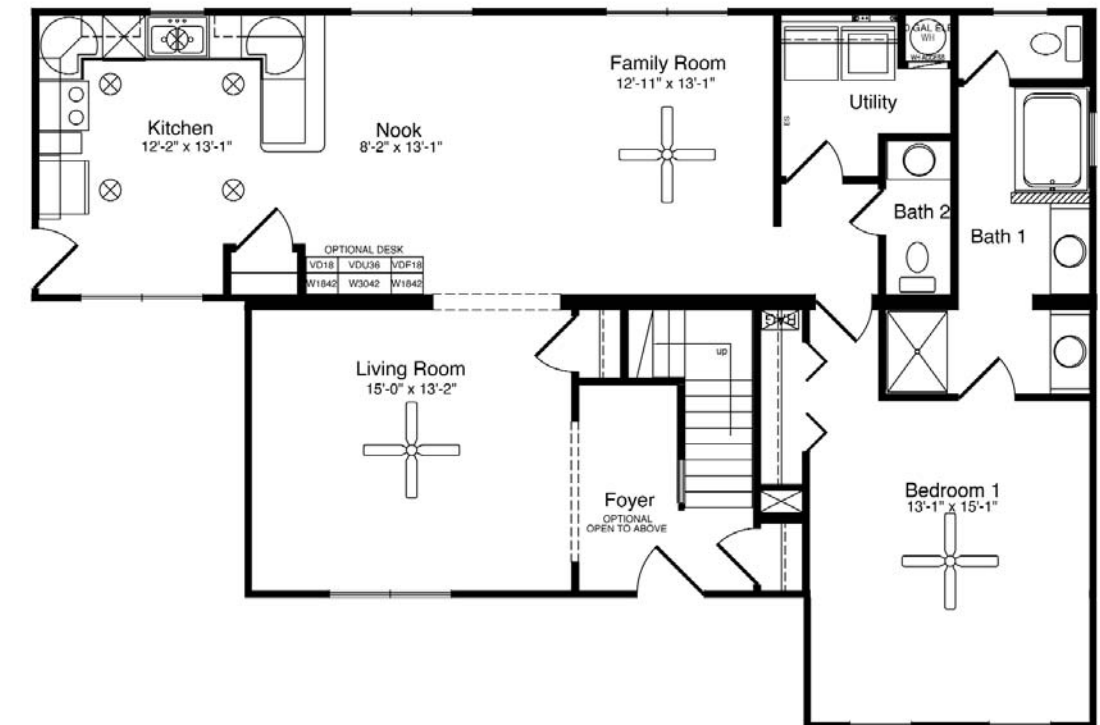
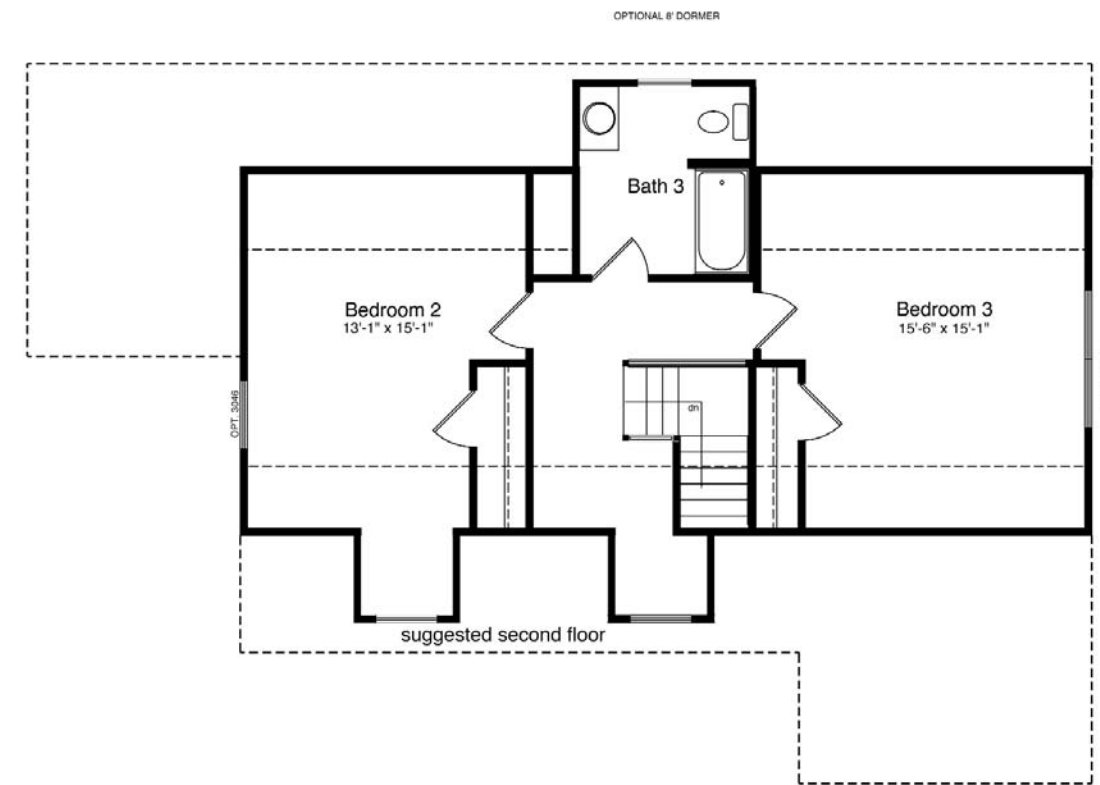
The Chesterfield provides a large family room/nook combination just off the kitchen. The living room is conveniently located just off the foyer, which can be opened to the dormer above. The master suite completes the first floor design and offers a private setting complete with his and her vanities. The suggested second floor has two additional bedrooms and a full bath.

The Chesterfield

3 Bedrooms, 2.5 Baths
 1,329 1st Floor, 690 2nd Floor, 2,019 Living Area
 33'10" x 50' Dimensions

All home elevations are artist renderings and may vary from actual construction. All floor plans and room sizes are approximate. All information contained is the sole property of HandCrafted Homes

The Chesterfield



All home elevations are artist renderings and may vary from actual construction. All floor plans and room sizes are approximate. All information contained is the sole property of HandCrafted Homes



HandCrafted Homes
 A BETTER WAY TO BUILD

The Chesterfield

3 Bedrooms, 2.5 Baths
 1,329 1st Floor, 690 2nd Floor, 2,019 Living Area
 33'10" x 50' Dimensions

877.424.4321

436.0001
 430.6662 fax

101 Eastern Minerals Rd Henderson, NC 27537

www.HandCraftedHomes.com