

# The Boone



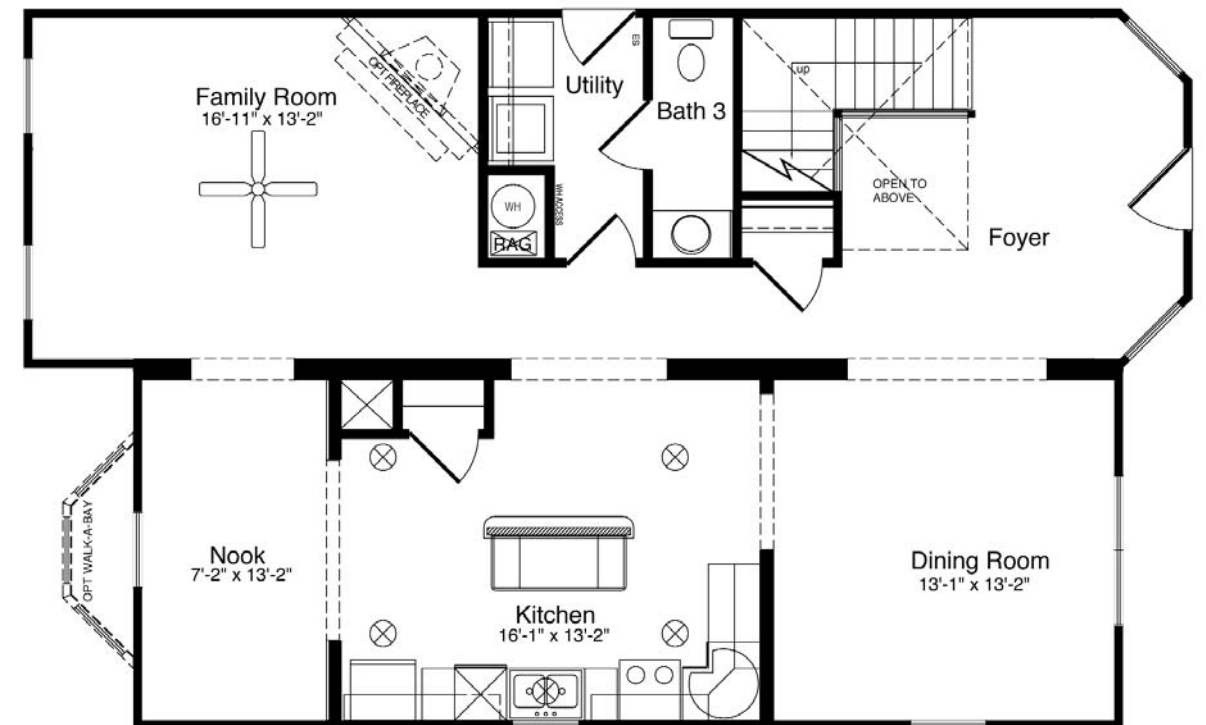
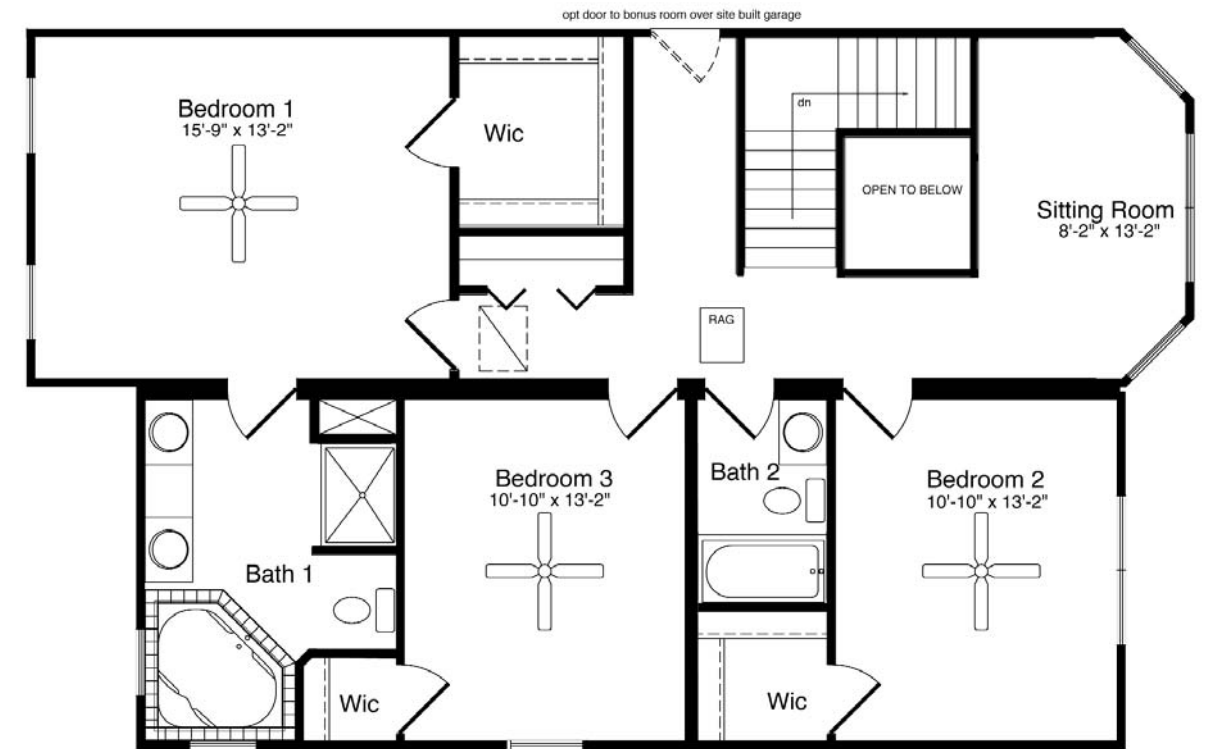
Designed to be the perfect vacation home, the Boone offers the desired layout for entertaining. Upon entering the home, you'll find that space is abundant. The foyer opens into a formal dining room that connects to the kitchen and breakfast nook. The enormous family room with optional fireplace is designed with convenience in mind. The second floor features the master suite, two additional bedrooms and a peaceful sitting area.

## The Boone

3 Bedrooms, 2.5 Baths  
 1,138 1st Floor, 1,061 2nd Floor, 2,199 Living Area  
 27'8" x 44'10" Dimensions

All home elevations are artist renderings and may vary from actual construction. All floor plans and room sizes are approximate. All information contained is the sole property of HandCrafted Homes

# The Boone



All home elevations are artist renderings and may vary from actual construction. All floor plans and room sizes are approximate. All information contained is the sole property of HandCrafted Homes



**HandCrafted Homes**  
 A BETTER WAY TO BUILD

## The Boone

3 Bedrooms, 2.5 Baths  
 1,138 1st Floor, 1,061 2nd Floor, 2,199 Living Area  
 27'8" x 44'10" Dimensions

**877.424.4321**

436.0001  
 430.6662 fax

101 Eastern Minerals Rd Henderson, NC 27537

[www.HandCraftedHomes.com](http://www.HandCraftedHomes.com)